

# THE NEW OMNITRAC HEAVY DUTY. DESIGNED TO LAST, PROTECTED BY DURASHIELD TECHNOLOGY.

## The New OMNITRAC HEAVY DUTY Range

The new OMNITRAC S and D HEAVY DUTY range is developed specifically for vehicles operating in tough on and off-road conditions. It provides that additional protection required in severe operations in mixed service application.

Such as high torque, longer offroad operation and increased road surface severity. This will give fleets great value and extended tire life even with tough working operations.



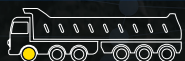
**High Mileage in Severe Service Conditions**



**Extra Chipping, Chunking & Tear Resistance**



**Added Durability & Retreadability**



**GOODYEAR**



# OMNITRAC S HEAVY DUTY

[STEER]

The new OMNITRAC S HEAVY DUTY steer axle tyre is designed to cope with demanding requirements in severe mixed service applications. It features very good on and off-road wear performance, significantly improved tread resistance to chipping and chunking and excellent retreadability thanks to the innovative DuraShield technology.



➔ **High mileage and enhanced durability in most severe mixed service conditions**

22.5"  M+S




## Features

## How does it work

## Advantage

1	DuraShield technology	Top belt prevents objects from penetrating the belt package and protects the casing from corrosion	New level of casing durability and retreadability performance
2	4-rib design	Robust tread design with massive shoulder ribs to resist the most demanding mixed service applications	High mileage and even wear performance without chunking
3	'Quick release' groove shapes and centreline stone ejectors	Trapped stones are quickly released by the tread movements and centreline stone ejectors prevent them from reaching the groove bottom	Excellent protection against stone damage leading to less punctures and more casing durability, excellent self cleaning in all terrains for good traction
4	High chip and chunk resistant tread compound with increased undertread rubber gauge	A new tread rubber designed specifically to resist chipping and chunking in all tyre life phases providing high mileage. Increased undertread rubber provides extra protection	High overall mileage and resistance to chipping and chunking. Improved retreadability through better casing protection

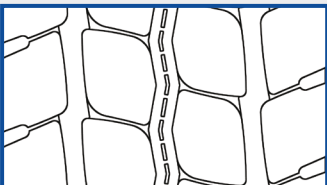
## Technical details table

Size	Load Index	Speed Symbol	Poss. Rim Widths	Comments	Fuel Efficiency 	Wet Grip 	Noise Emission (dB) 
12 R 22.5	152/148	K					Under development
13 R 22.5	156/150	K	9.00/9.75				Under development
315/80 R 22.5	156/150	K	9.00/9.75				Under development
325/95 R 24	162/160	K	8.50/9.00				Under development

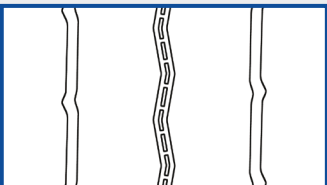
## Retreading and regrooving

The OMNITRAC S HEAVY DUTY is both retreadable and regroovable and has been developed according to the 'Multiple Life Concept' approach – allowing fleets to make the best use of their tyre assets and substantially reduce their cost per kilometre.

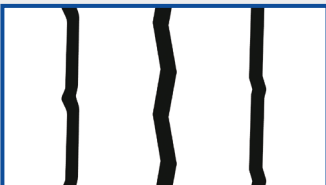
### Regrooving recommendations



New tyre tread



80% worn



Regrooved tyre

Max. regrooving depth 3mm, regrooving width 9-10mm.



# OMNITRAC D HEAVY DUTY

[DRIVE]

The new OMNITRAC D HEAVY DUTY drive axle tyre is specifically designed for demanding requirements in severe mixed service applications.

It features excellent traction and self-cleaning, significantly enhanced resistance to chipping and chunking, very good off-road wear performance, and improved retreadability thanks to the innovative DuraShield technology.






➔ **Long tread life and traction in all heavy mixed service applications**

22.5"  **M+S**

Features	How does it work	Advantage
<b>1</b> DuraShield technology	Top belt prevents objects from penetrating the belt package and protects the casing from corrosion	Ultimate corrosion protection of the tyre casing, new level of casing durability and retreadability performance
<b>2</b> Directional tread design with siped blocks	Directional tread design ensures traction and self cleaning until the end of the tread life	Traction in all surface conditions including winter service
<b>3</b> Continuous tractive centreline design	The robust tractive centreline provides traction and concurrently protects the tread against damages in its most vulnerable zone	Even wear in chipping and chunking conditions, high mileage potential and casing protection
<b>4</b> Wide open shoulder grooves and dynamic block design	The V shaped directional design of the blocks provides edges for traction and ejects stones and mud quickly	High traction throughout complete tyre life and with all carriageway conditions; chip/chunk resistance under torque and stone damage prevention
<b>5</b> High chip and chunk resistance tread compound with increased undertread rubber gauge	A new tread rubber designed specifically to resist chipping and chunking in all tyre life phases providing high mileage. Increased undertread rubber provides extra protection	High overall mileage and resistance to chipping and chunking. Improved retreadability through better casing protection

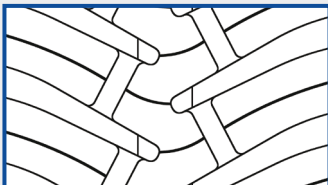
## Technical details table

Size	Load Index	Speed Symbol	Poss. Rim Widths	Comments	Fuel Efficiency 	Wet Grip 	Noise Emission (dB) 
12 R 22.5	152/148	K					Under development
13 R 22.5	156/150	K	9.00/9.75				Under development
315/80 R 22.5	156/150	K	9.00/9.75				Under development
325/95 R 24	162/160	K	8.50/9.00				Under development

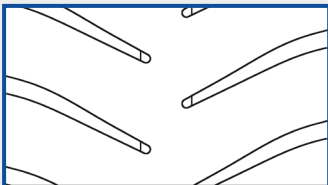
## Retreading and regrooving

The OMNITRAC D HEAVY DUTY is both retreadable and regroovable and has been developed according to the 'Multiple Life Concept' approach – allowing fleets to make the best use of their tyre assets and substantially reduce their cost per kilometre.

### Regrooving recommendations



New tyre tread



80% worn



Regrooved tyre



Max. regrooving depth 3mm, regrooving width 9mm.

# OMNITRAC MST II

[TRAILER]

The OMNITRAC MST II trailer tyre features a wide tread and multi-radius cavity for even wear and increased mileage potential.  
The large centre block design and wide shoulder ribs provide excellent damage resistance and high stability.

➔ **Excellent durability and robustness combined with high mileage potential in on and off-road applications**



M+S FRT\*

Features	How does it work	Advantage
1 Wide tread with multi-radius cavity	Even ground pressure distribution	Reduced tread wear and high mileage potential
2 Large centreline ribs	Increased resistance to cuts, chipping and chunking	Excellent damage resistance, high level of stability
3 Zig-zag centreline groove and off-set block edge design	Improved on and off-road traction and braking	Mobility in all on and off-road conditions, good wet grip
4 Self-cleaning capabilities	Reduced stone holding and drilling	Increased durability and retreadability

## Technical details table

Size	Load Index	Speed Symbol	Poss. Rim Widths	Comments	Fuel Efficiency	Wet Grip	Noise Emission (dB)
385/65R22.5	160 (158)	K (L)	11.75		C	B	72
445/65R22.5	169	K	13.00/14.00		B	B	71

## Retreading and regrooving

The OMNITRAC MST II is both retreadable and regroovable and has been developed according to the 'Multiple Life Concept' approach – allowing fleets to make the best use of their tyre assets and substantially reduce their cost per kilometre.

### Regrooving recommendations

New tyre tread

80% worn

Regrooved tyre

Max. regrooving depth 3mm, regrooving width 8mm.

\* 'FRT' stands for 'Free Rolling Tyre' and is a legal marking according to the UNECE Regulation No. 54, which indicates that the tyre is specifically designed and intended for the equipment of trailer axes and axes of motor vehicles other than front steering and all drive axes. Therefore these trailer tyres marked 'FRT' should be used exclusively on trailer axes and axes of motor vehicles other than front steering and all drive axes and should not be fitted in any other position. Goodyear Dunlop will not warrant and cannot be held accountable for any potential liability claim involving FRT tyres fitted outside these recommendations.



# New Goodyear OMNITRAC HEAVY DUTY range

The new OMNITRAC S and D HEAVY DUTY range is developed specifically for vehicles operating in tough on and off-road conditions. It embraces the 'Multiple Life Concept' with a more durable and damage resistant casing and innovative tread compound extending the life cycle. Plus, it offers 3PMSF marking on all steer and drive axle tyres to cope with the most restrictive winter legislation.

## **The new OMNITRAC HEAVY DUTY range features:**

- ➔ **Enhanced durability and retreadability by introducing the innovative DuraShield technology and new tread construction and compounds**
- ➔ **Traction in on and off-road applications with increased winter performance and 3PMSF marking on all OMNITRAC HEAVY DUTY steer and drive axle tyres**
- ➔ **Long life tread resistance to chipping and chunking**

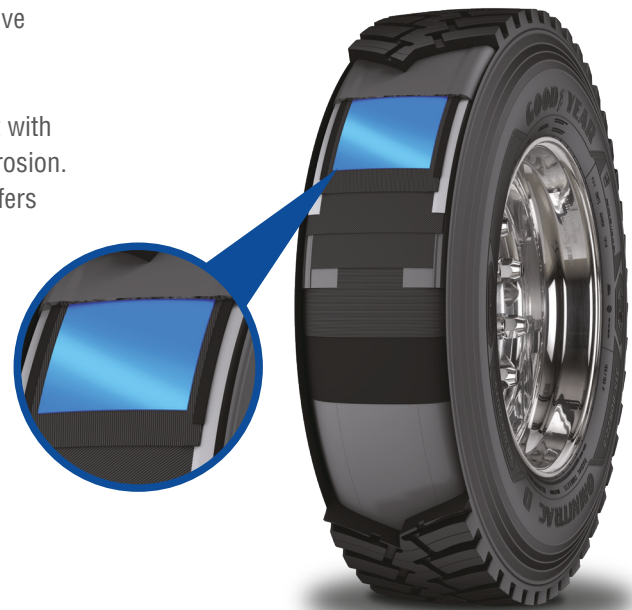
### **DuraShield technology**

The new OMNITRAC S and D HEAVY DUTY range features the innovative **DuraShield technology** casing.

A non-metallic top belt layer prevents moisture from getting in contact with the steel belts and protects the casing structure from damage and corrosion. The new design enhances the durability throughout the tyre life and offers ideal conditions for high quality retreading.

### **DuraShield top layer**

The ultimate corrosion protection of the tyre casing, setting new standards of damage resistance and retreadability performance.



## **RFID Identification**

### **RFID tags are integrated in OMNITRAC S and D HEAVY DUTY tyres**

An RFID tag is embedded inside the tyre and allows simple identification and connectivity to tyre management and tracking systems. The RFID contains ISO standard information as per SGTIN96 coding.

Tyres can communicate with a cloud network on an individual serial number level, therefore, allowing much better tyre flow management.

### **RFID logo:**



On Non Serial Side



On Serial Side





**Goodyear Middle East FZE**  
Dubai Silicon Oasis, A-Wing,  
4th Floor,  
P.O. Box 33528, Dubai, U.A.E.

**Telephone**  
+971 4 372 4800  
**Telefax**  
+971 4 372 4871

