

NON-STOP EFFICIENCY



**FUELMAX
PERFORMANCE**

A STRAIGHT LINE
TO EFFICIENCY AND
SUSTAINABILITY

GOODYEAR

FUELMAX PERFORMANCE

THE MOTORWAY SPECIALIST
TYRE THAT PROVIDES
THE HIGHEST FUEL ECONOMY
AND LOWEST EMISSIONS



Our fleet customers clock up millions of kilometres every year – and the majority of that distance is driven on Europe’s motorways. Long, straight, continuous journeys taking customer goods from depot to destination in the most direct, efficient way possible.

The **FUELMAX PERFORMANCE** is the motorway tyre designed to meet those needs perfectly. By **minimising rolling resistance**, it helps to **maximise fuel efficiency** on those long, direct runs, which means that every motorway kilometre requires less fuel and generates less CO₂.

With **FUELMAX PERFORMANCE**, **we give you the most direct route to efficiency and sustainability.**



RADIO FREQUENCY IDENTIFICATION (RFID)

RFID tags are integrated in all **FUELMAX S and D PERFORMANCE** tyres.

An RFID tag is embedded inside the tyre and allows simple identification and connectivity to tyre management and tracking systems. The RFID contains ISO standard information as per SGTIN96 coding. Tyres can communicate with a cloud network on an individual serial number level, optimising tyre flow management.

Low emissions, high fuel efficiency

Thanks to low rolling resistance

Extendable tyre life

High retreadability through high-quality casings

All-weather capabilities

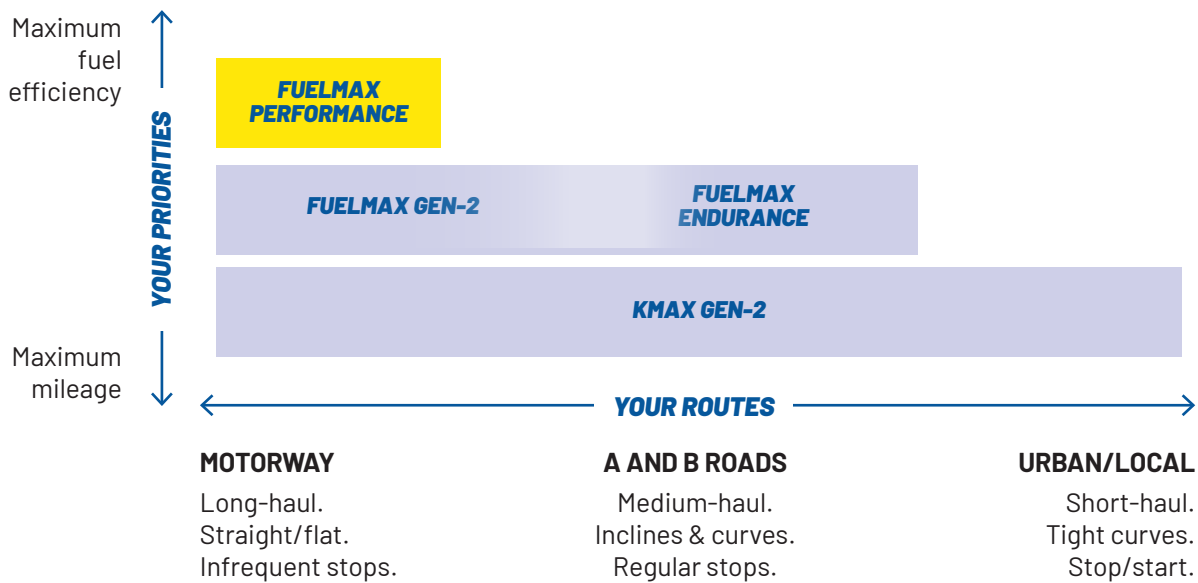
3PMSF rating

High levels of traction

Throughout tyre life

WHICH TYRES ARE RIGHT FOR YOU?

Fleet managers can choose from a variety of tyres from Goodyear to suit their needs. **FUELMAX PERFORMANCE** was designed for fleet managers who want to reduce emissions and improve fuel efficiency, and whose fleets undertake long-haul routes, predominantly using motorways.



FUELMAX ENDURANCE IS THE IDEAL CHOICE OF TYRE FOR FLEETS THAT:



AIM TO REDUCE
EMISSIONS



WANT TO IMPROVE
FUEL EFFICIENCY



RUN ROUTES
MAINLY ON
MOTORWAYS



FUELMAX PERFORMANCE

FUEL EFFICIENCY & LOW EMISSIONS BY DESIGN

STEER



5-RIB

6-RIB

1. INNOVATIVE FULL SILICA TREAD

The polymer network used provides **ultra-low levels of rolling resistance**, reducing the amount of fuel consumed and CO₂ emitted.

2. OPTIMISED GROOVE DISTRIBUTION

Provides **regular tread wear** along with **improved water evacuation** for **optimised wet grip**.

3. DEEP SIPING

Sipes go down to 70% of tread depth and maintain biting edges, providing **3PMSF capability**, **good traction** and **wet braking performance** throughout the tyre life.

4. EVEN FOOTPRINT PRESSURE DISTRIBUTION

Shows exceptionally regular footprint pressure distribution in a wide range of load conditions. This helps to maintain **regular tread wear** and **high mileage in long-haul** applications.

FUELMAX S PERFORMANCE

A STEER AXLE TYRE DESIGNED FOR MAXIMUM LONG-HAUL FUEL EFFICIENCY AND LOW EMISSIONS



DRIVE



FUELMAX D PERFORMANCE

DRIVE AXLE TYRE WITH INTELLIMAX GROOVE TECHNOLOGY AND OTHER EFFICIENCY FEATURES FOR MOTORWAY ROUTES



1. INTELLIMAX GROOVE TECHNOLOGY

IntelliMax grooves open when 50% worn, creating **additional grip** and drainage capabilities **in late tyre life**.

2. DEEP HIGH-PITCH SIPING

Sipes go down to 70% of tread depth and maintain biting edges, giving you **3PMSF capability** and **good traction and wet braking performance** throughout the tyre life.

3. FUEL-EFFICIENT, FULL SILICA COMPOUND

Chemical formulation of the compound **minimises rolling resistance**, helping deliver low levels of fuel consumption and CO₂ emissions.

4. EVEN FOOTPRINT PRESSURE DISTRIBUTION

Shows exceptionally regular footprint pressure distribution in a wide range of load conditions. This makes for **regular tread wear** and **high mileage** in long-haul applications.



TRAILER



FUELMAX T

THE PERFECT TRAILER TYRE TO ACCOMPANY
FUELMAX PERFORMANCE TYRES AND DELIVER
HIGH FUEL EFFICIENCY AND LOW EMISSIONS

The FUELMAX T features a multi-radius cavity and a special tread compound offering ultra-low rolling resistance for excellent fuel saving, combined with improved mileage performance, good braking in wet conditions and low noise emissions. The new bead geometry in combination with modern high tensile cord material creates a highly robust casing structure for improved retreadability and extended tyre life.

1. SPECIFIC SILICA-RICH TREAD COMPOUND

Provides a combination of **good wet grip**, **low rolling resistance** and **high mileage potential**.

2. COMPLEX MULTI-RADIUS CAVITY

Optimises pressure distribution in the footprint, which means **high wearable tread volume**, **low rolling resistance** and **fuel efficiency**.

3. WIDE AND SOLID SHOULDER RIBS

Highly resistant against shoulder wear, which **reduces irregular wear** in pure long-haul use. Helps to **extend tyre life** and **improve stability and handling**.



'FRT' stands for 'Free Rolling Tyre' and is a legal marking according to the UNECE Regulation No.54, which indicates that the tyre is specifically designed and intended for the equipment of trailer axles and axles of motor vehicles other than front steering and all drive axles. Therefore, these trailers tyres marked 'FRT' should be used exclusively on trailer axles and axles of motor vehicles other than front steering and all drive axles and should not be fitted in any other position. Goodyear Dunlop will not warrant and cannot be held accountable for any potential liability claim involving FRT tyres fitted outside these recommendations.

FRT

M+S

FUELMAX PERFORMANCE

TECHNICAL DATA

REGROOVING RECOMMENDATIONS

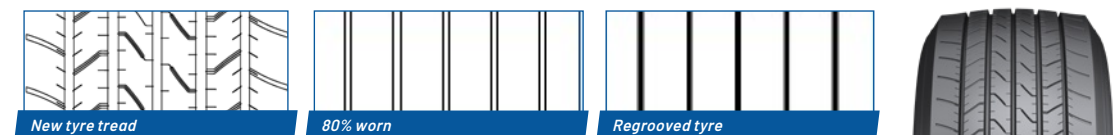
FUELMAX PERFORMANCE tyres are both retreadable and regroovable and have been developed for optimised sustainability, allowing fleets to make the best use of their tyre assets and substantially reduce their cost per mile and environmental footprint.

FUELMAX S PERFORMANCE 5-RIB DESIGN (315/70 R 22.5)



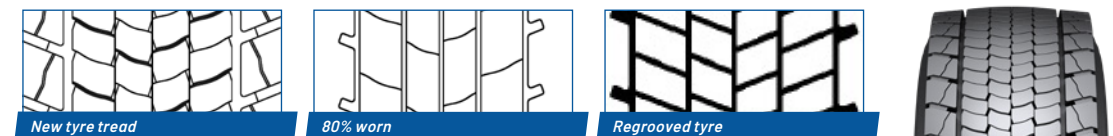
Max. regrooving depth 3mm, regrooving width 6mm.

6-RIB DESIGN (385/55 R 22.5)



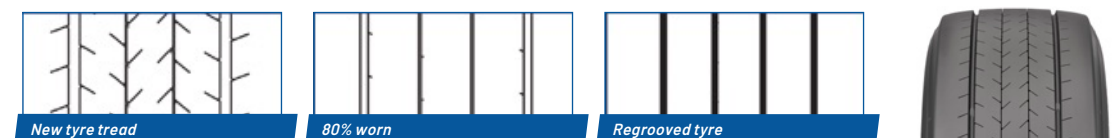
Max. regrooving depth 3mm, regrooving width 6mm.

FUELMAX D PERFORMANCE



Max. regrooving depth 3mm, regrooving width 6mm.

FUELMAX T



Max. regrooving depth 3mm, regrooving width 6-8mm.

TYRE DESIGN NAME	SIZE	LOAD / SPEED INDEX 1	LOAD / SPEED INDEX 2	FUEL EFFICIENCY	WET GRIP	NOISE EMISSIONS (CLASS / dB)	SNOW GRIP 3PMSF	M+S	RFID
FUELMAX S PERFORMANCE HL	315/70 R 22.5	156/150 L		A	B	A 71	✓	✓	✓
FUELMAX S PERFORMANCE	385/55 R 22.5	160 K	158 L	A	B	A 71	✓	✓	✓
FUELMAX D PERFORMANCE	315/70 R 22.5	154/148 L	152/148 M	A	C	A 73	✓	✓	✓
FUELMAX T	435/50 R 19.5	160 J		A	C	B 73		✓	
FUELMAX T HL	435/50 R 19.5	164 J		A	C	A 70		✓	
FUELMAX T HL	385/65 R 22.5	164 K	158 L	A	C	A 70		✓	
FUELMAX T	385/55 R 22.5	160 K	158 L	A	C	A 70		✓	



Goodyear Operations S.A.
Avenue Gordon Smith
L-7750 Colmar-Berg
Luxembourg



www.goodyear.eu/truck

Subject to modifications and errors.
Products and data are shown for illustrative
purposes only. Graphic accuracy and logo
placement may differ from the genuine product.

(0222/ENG)

