



Product Service

**Choose certainty.  
Add value.**



# TÜV SÜD - Tire Test 2017

## 205/55 R16 – Goodyear Vector 4Seasons Gen-2

Tire Performance Test acc. to PPP 90023A:2014

Test Period: July - August 2017

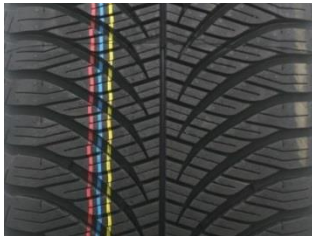
Report No. 713112421-02

## TIRE DETAILS

**DIMENSION: 205/55 R16**

### TIRE BRANDS / PATTERNS IN THE TEST:

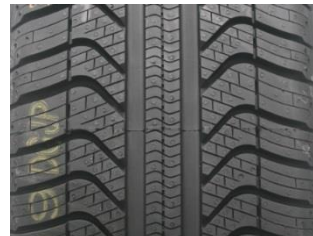
#### REFERENCE TIRE:



**GOODYEAR**  
**VECTOR 4SEASONS GEN-2**  
94 V, DOT H30F JRTR 1717, 1817

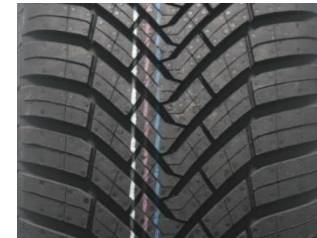


**MICHELIN**  
**CROSSCLIMATE+**  
94 V, DOT HDWC 0JYX 1617

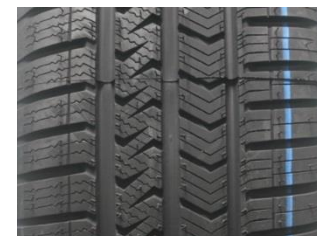


**PIRELLI**  
**CINTURATO ALL SEASON**  
91 V, DOT 93BK U341 1817

#### COMPETITORS:



**CONTI**  
**ALLSEASONCONTACT**  
94 V, DOT HW0F D4H6 1517, 1717



**VREDESTEIN**  
**QUATRAC 5**  
94 V, DOT DVK8 0000 1317

- The test samples of Goodyear Vector 4Seasons Gen-2 were provided for the test by the client. Compliance to market tire was verified.
- All other tires were purchased in the normal market by TÜV SÜD.
- TÜV SÜD randomly selected the tires for the individual tests.



## TEST DETAILS

### ■ Test Locations

- Wet: GPG Colmar Berg (LUX)
- Snow: SHPG Cardrona (NZ)

### ■ Test Vehicles

- VW Golf VII 1.4 TSI

### ■ Procedure and Evaluation

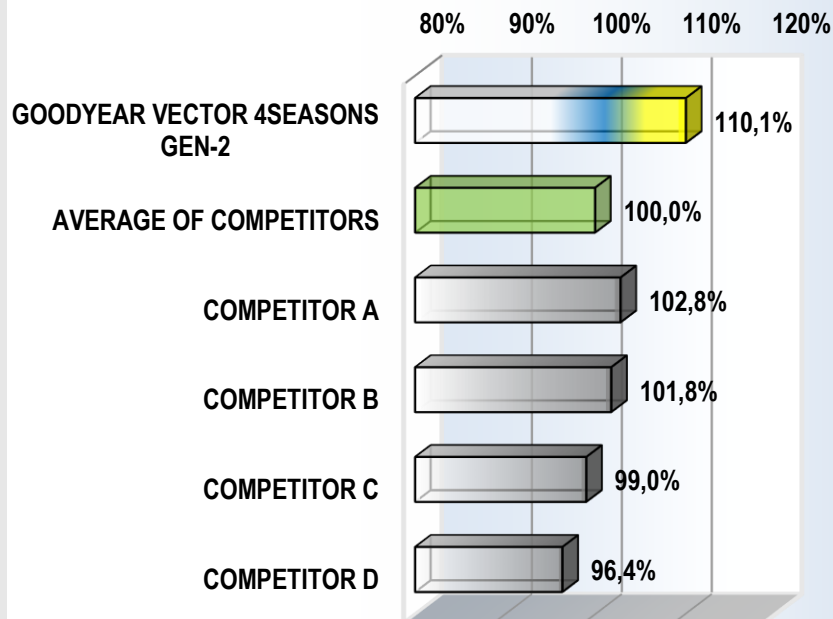
- In most tests, the reference/control tire is tested repeatedly in the progress of the test to detect and consider changes of the ambient test parameters and correct its performance by linear interpolation.
- Generally, all tires in a test are primarily evaluated in relation to the reference/control tire.
- The performance is expressed as a percentage value, calculated on the basis of the measured and corrected test data.
- In this present evaluation, the 100% baseline is formed by the average of the tested competitors.
- In all evaluations, a percentage > 100% means better and <100% means worse.

## TEST RESULTS

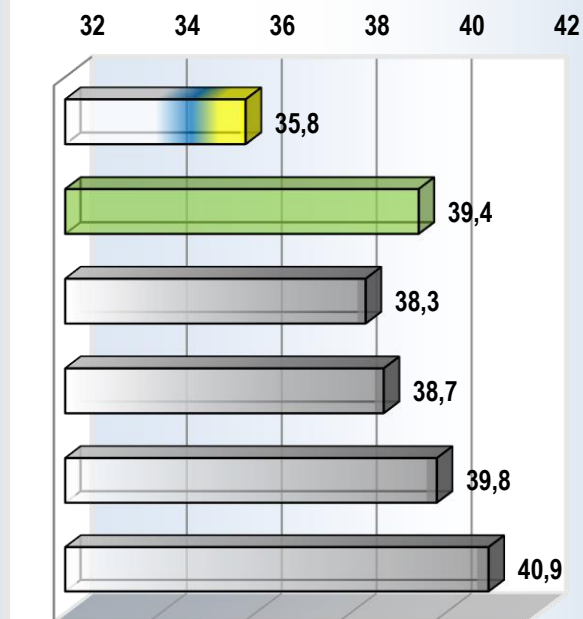
### WET BRAKING

- ABS-braking
- Speed range: 80 to 20 km/h
- Tested on low  $\mu$  wet surface
- Result Goodyear Vector 4Seasons Gen-2:  $\emptyset$  Stopping distance / mean deceleration: 33.5 m / 6.90 m/s<sup>2</sup>

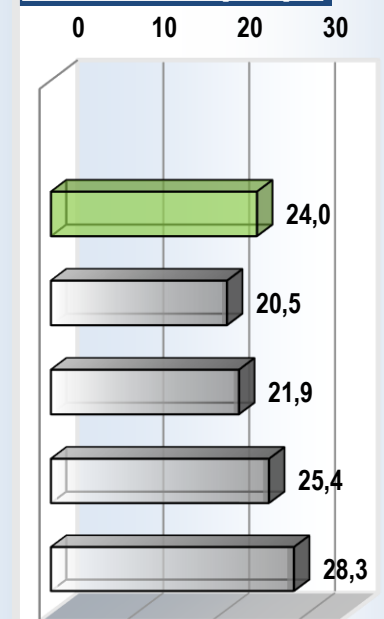
WET BRAKING PERFORMANCE \* [%]



STOPPING DISTANCE [m], 80-0 km/h \*\*



RESIDUAL SPEED WHEN GYV4S STOPPED [km/h] \*\*\*



\*) The calculation of the percentage performance is based on the mean deceleration values resulting from the measured braking distances.

\*\*) The extrapolation is based on the mean corrected deceleration values resulting from the measured braking distances.

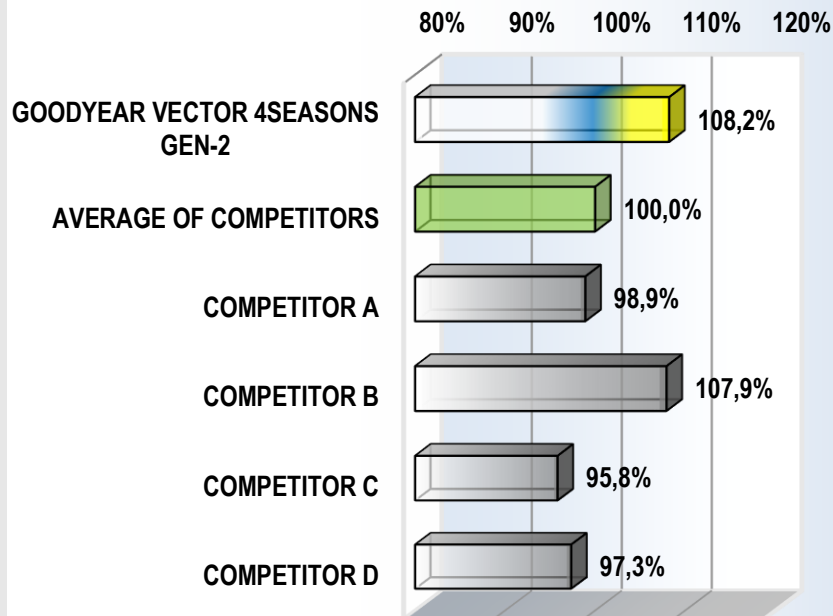
\*\*\*) The calculation of the residual speed is based on the extrapolated stopping distance (80-0 km/h) and the mean deceleration values resulting from the measured braking distances.

## TEST RESULTS

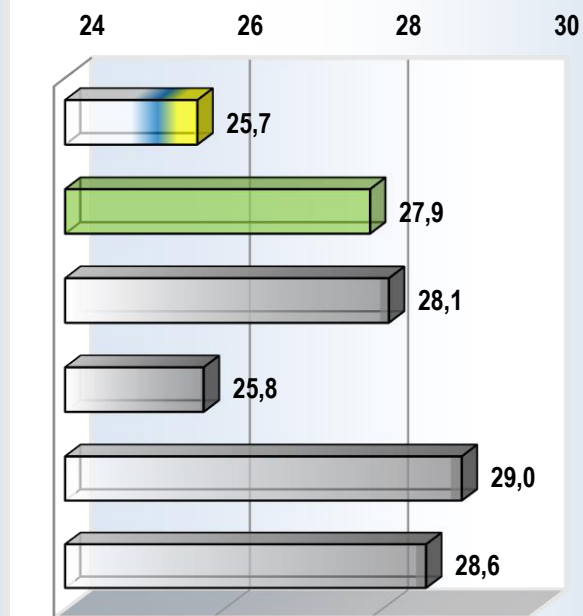
### ▪ BRAKING ON SNOW

- ABS-braking      - Speed range: 50 to 5 km/h      - Duplicate testing (test and re-test on two different days)      - Test surface: compressed snow
- Result Goodyear Vector 4Seasons Gen-2:      Ø Stopping distance / mean deceleration (average of test & re-test): 25.4 m / 3.76 m/s<sup>2</sup>

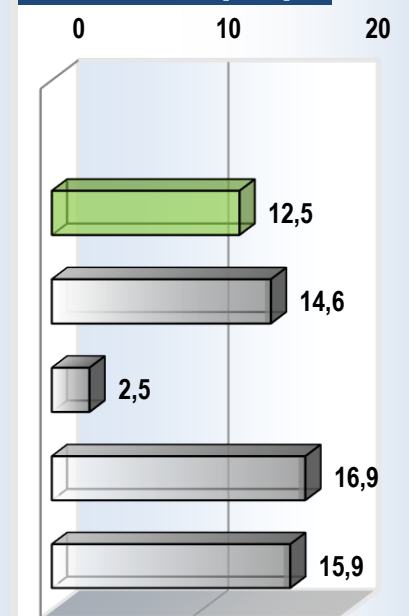
**SNOW BRAKING PERFORMANCE \* [%]**



**STOPPING DISTANCE [m], 50-0 km/h \*\***



**RESIDUAL SPEED WHEN GYV4S STOPPED [km/h] \*\*\***



\*) The calculation of the percentage performance is based on the mean deceleration values resulting from the measured braking distances.

\*\*) The extrapolation is based on the mean corrected deceleration values resulting from the measured braking distances.

\*\*\*) The calculation of the residual speed is based on the extrapolated stopping distance (50-0 km/h) and the mean deceleration values resulting from the measured braking distances.