



Product Service

**Add value.  
Inspire trust.**



# TÜV SÜD – Tire Test 2021/2022

## 205/55 R16 94V XL – Goodyear UltraGrip Performance 3

Benchmark Test

Test Period: December 2021

Report No. 713234277-BM

## TIRE DETAILS

### TIRE BRANDS / PATTERNS IN THE TEST:

#### CANDIDATE TIRE:



**GOODYEAR  
ULTRAGRIP PERFORMANCE 3  
205/55 R16 94V XL 3PMSF**



**BRIDGESTONE  
BLIZZAK LM005  
205/55 R16 94V XL 3PMSF**

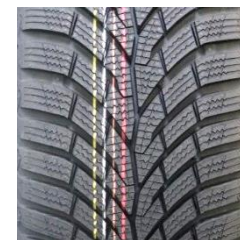


**MICHELIN  
ALPIN 6  
205/55 R16 94V XL 3PMSF**

#### COMPETITORS:



**PIRELLI  
CINTURATO WINTER 2  
205/55 R16 94H XL 3PMSF**



**CONTINENTAL  
WINTERCONTACT TS 870  
205/55 R16 94V XL 3PMSF**

- The test samples of Goodyear UltraGrip Performance 3 were provided for the test by the client.
- All other tires were purchased in the normal market by TÜV SÜD.
- TÜV SÜD randomly selected the tires for the individual tests.



## TEST DETAILS

### ■ Test Locations

- Snow: Artic Center Saariselkä (FIN)
- Wet & Dry: GPG Mireval (F)

### ■ Test Vehicles

- VW Golf VIII 1.5TSI, VW Golf VIII 2.0TDI

### ■ Procedure and Evaluation

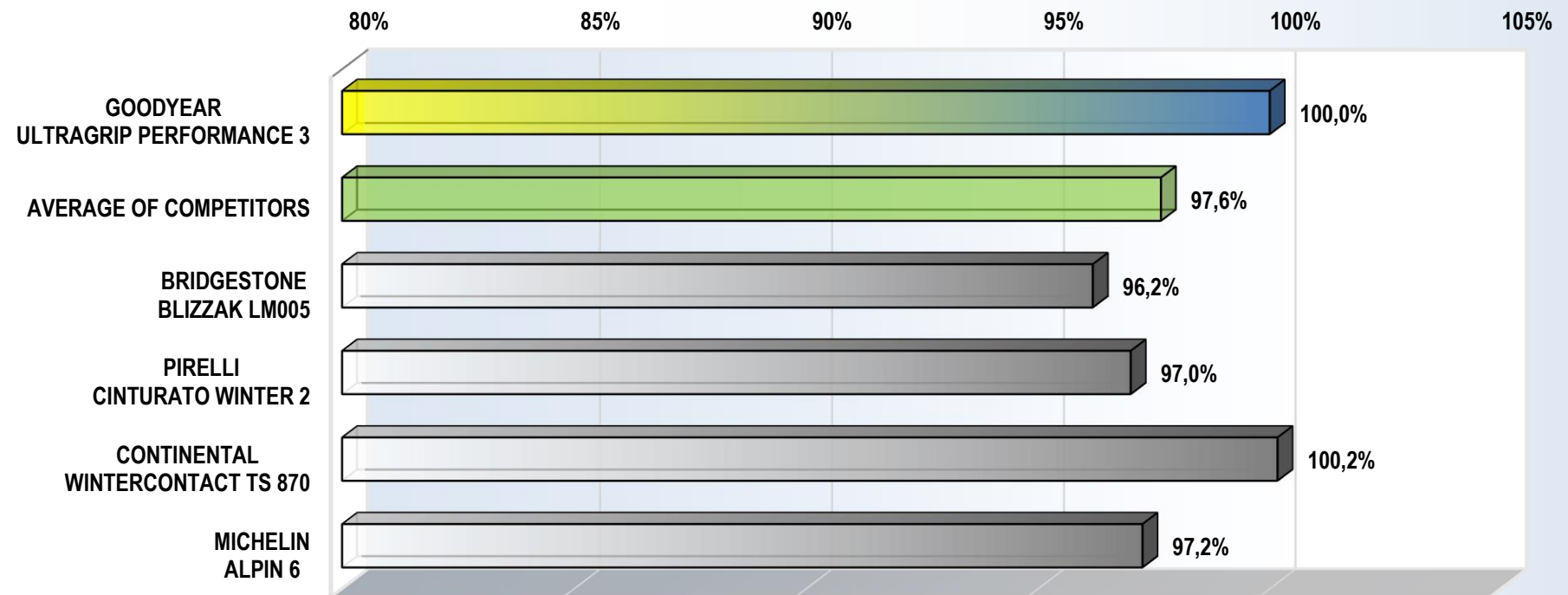
- In most tests, the reference/control tire is tested repeatedly in the progress of the test to detect and consider changes of the ambient test parameters and correct its performance by linear interpolation.
- Generally, all tires in a test are primarily evaluated in relation to the reference/control tire.
- The performance is expressed as a percentage value, calculated on the basis of the measured and corrected test data.
- In this present evaluation, the performance of each tire is assessed relative to the reference tire (Goodyear  $\hat{=}$  100%).
- In all evaluations, a percentage  $\geq 100\%$  means better and  $\leq 100\%$  means worse.

## TEST RESULTS

### ■ ACCELERATION ON SNOW

- ETC activated
- Speed range: 10 to 30 km/h
- Double execution
- Test surface: compressed snow
- Result Goodyear UltraGrip Performance 3: Ø Acceleration time / mean acceleration (average of test & re-test): 4.09 sec / 1.36 m/s<sup>2</sup>

#### SNOW TRACTION PERFORMANCE \* [%]



\*) The calculation of the percentage performance is based on the mean acceleration values resulting from the measured acceleration times.

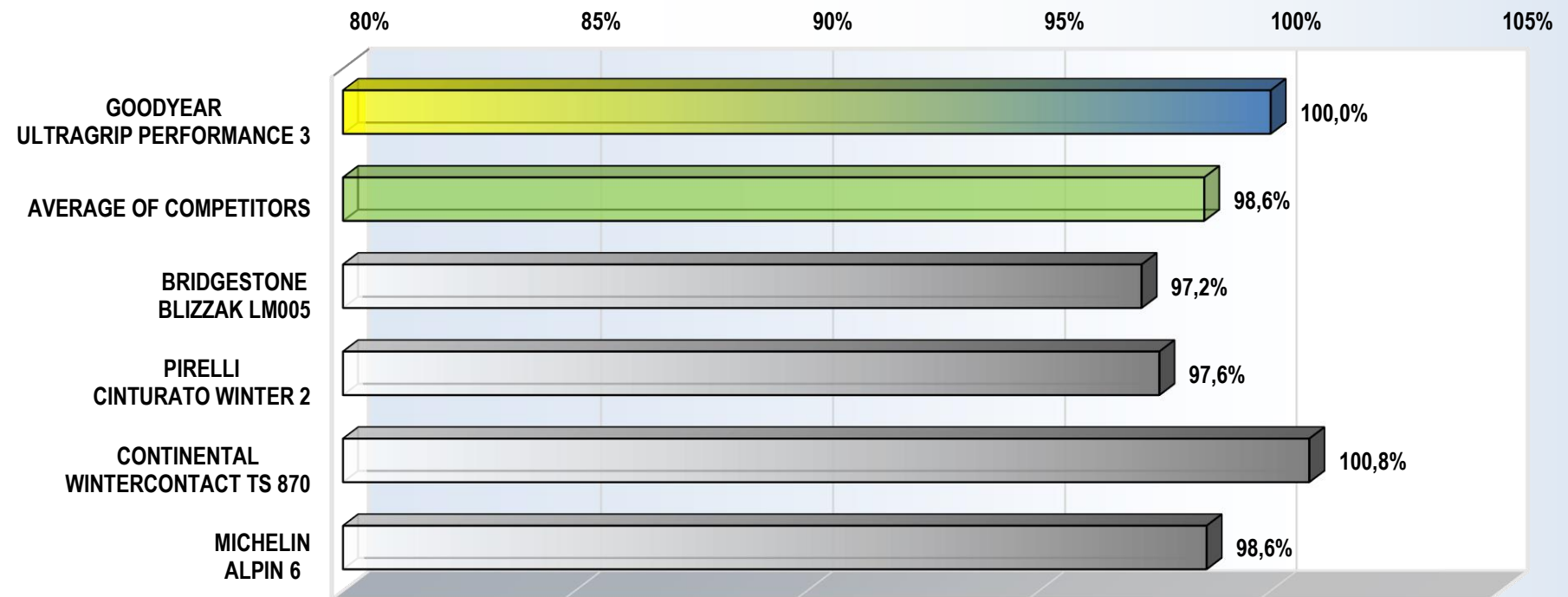


## TEST RESULTS

### ▪ BRAKING ON SNOW

- ABS-braking                      - Speed range: 50 to 5 km/h                      - Double execution                      - Test surface: compressed snow
- Result Goodyear UltraGrip Performance 3:    Ø Stopping distance / mean deceleration (average of test & re-test): 26.9 m / 3.55 m/s<sup>2</sup>

#### SNOW BRAKING PERFORMANCE \* [%]



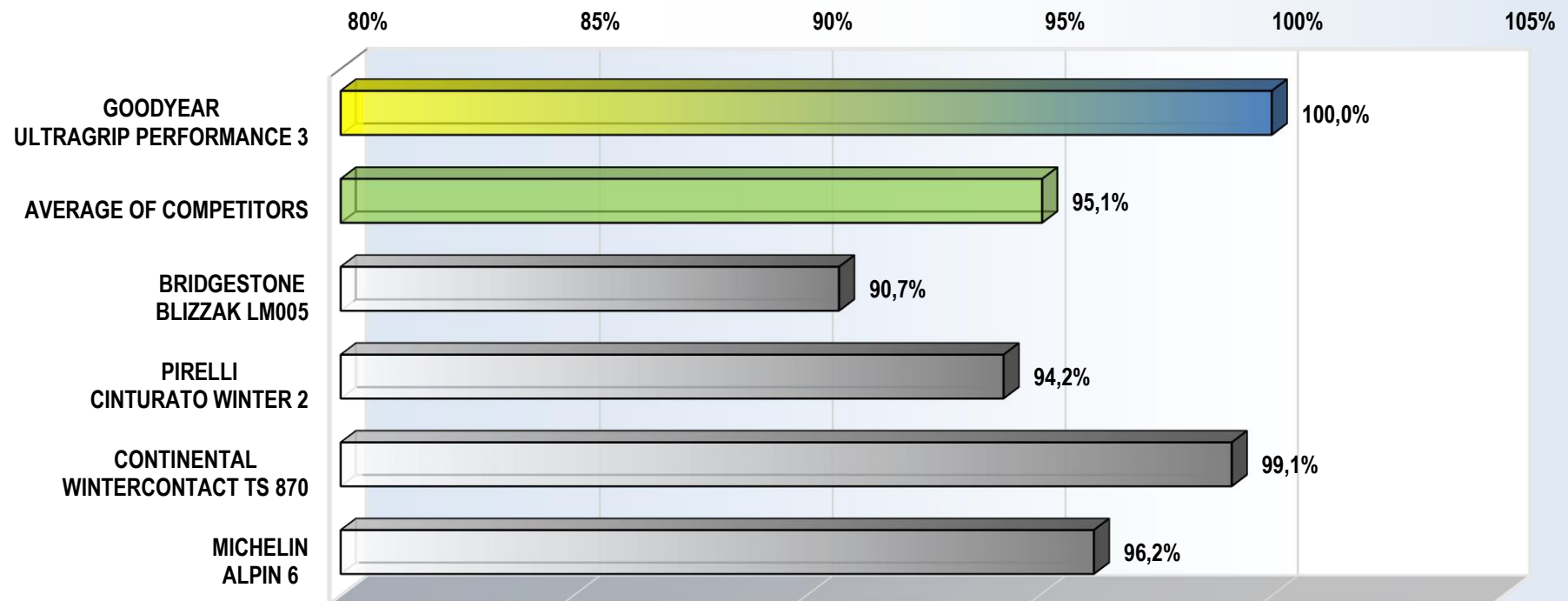
\*) The calculation of the percentage performance is based on the mean deceleration values resulting from the measured braking distances.

## TEST RESULTS

### ▪ HANDLING ON SNOW

- ESP off    - Subjective assessment & lap times    - Double execution    - Snow handling track, length track 1: 930 m / track 2: 790 m
- Result Goodyear UltraGrip Performance 3:    Ø Speed / rating (average of test & re-test): 55.76 km/h / 8.57 (out of max.10)

#### SNOW HANDLING PERFORMANCE \* [%]



\*) The calculation of the percentage performance is based on the speed and the rating scores (at the ratio 2:1).

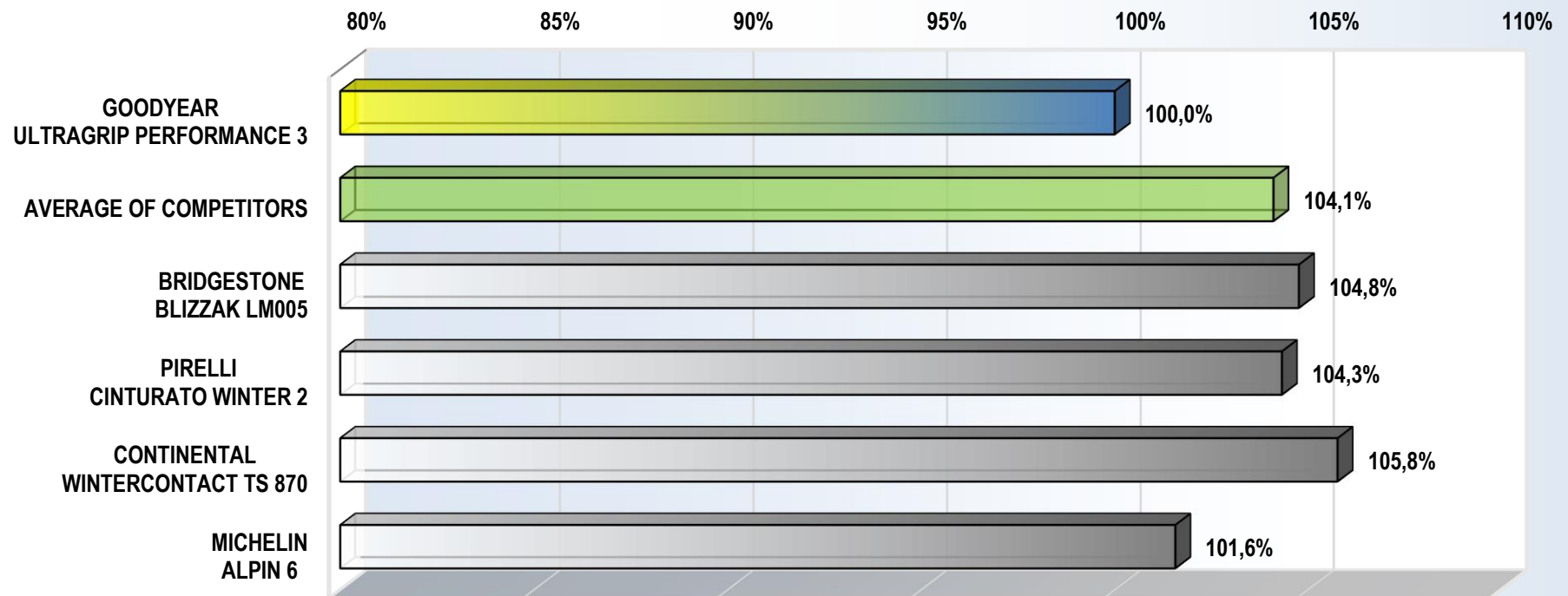


## TEST RESULTS

### ■ AQUAPLANING STRAIGHT-LINE

- Water depth: ~ 9 mm      - Aquaplaning speed at 15% slip difference
- Result Goodyear UltraGrip Performance 3:    Ø Aquaplaning speed: 90.4 km/h

#### AQUAPLANING STRAIGHT-LINE PERFORMANCE \* [%]



\*) The calculation of the percentage performance is based on the aquaplaning speed.

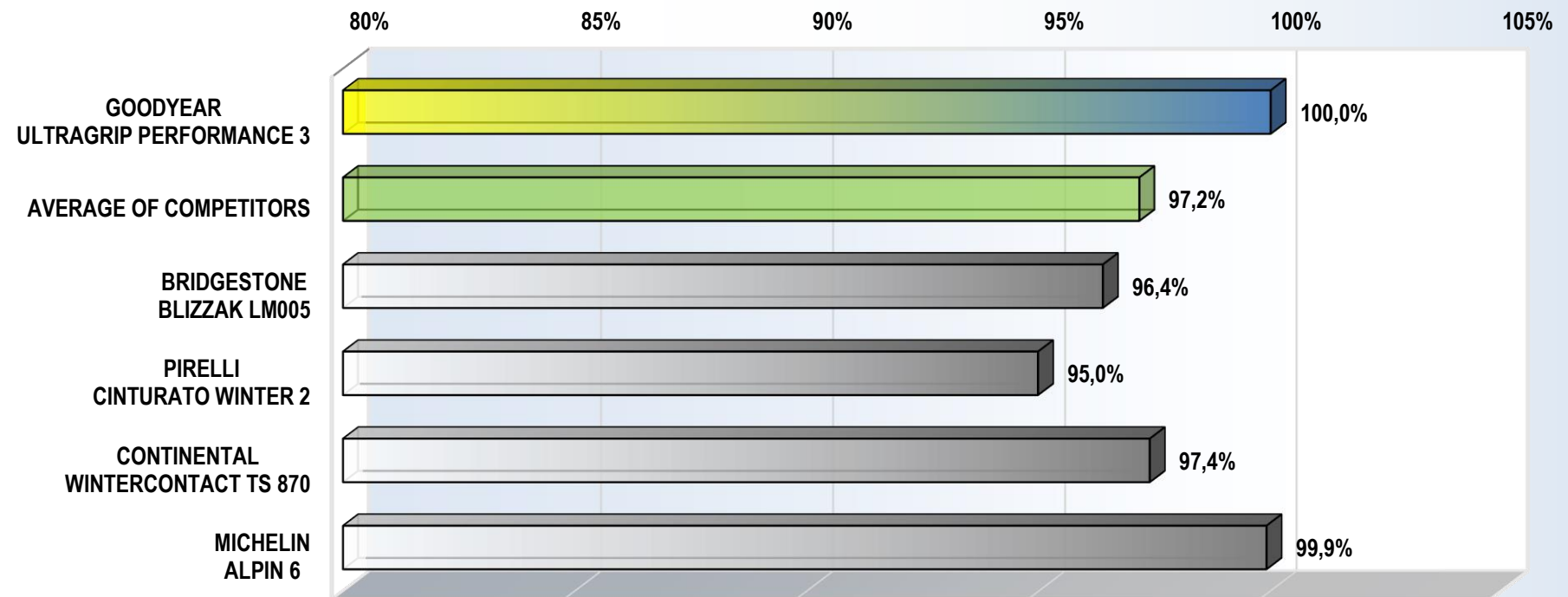


## TEST RESULTS

### WET BRAKING LOW $\mu$

- ABS-braking
- Speed range: 80 to 20 km/h
- Tested on wet asphalt with low friction level
- Result Goodyear UltraGrip Performance 3:  $\emptyset$  Stopping distance / mean deceleration: 31.0 m / 7.48 m/s<sup>2</sup>

#### WET BRAKING PERFORMANCE \* [%]



\*) The calculation of the percentage performance is based on the mean deceleration values resulting from the measured braking distances.



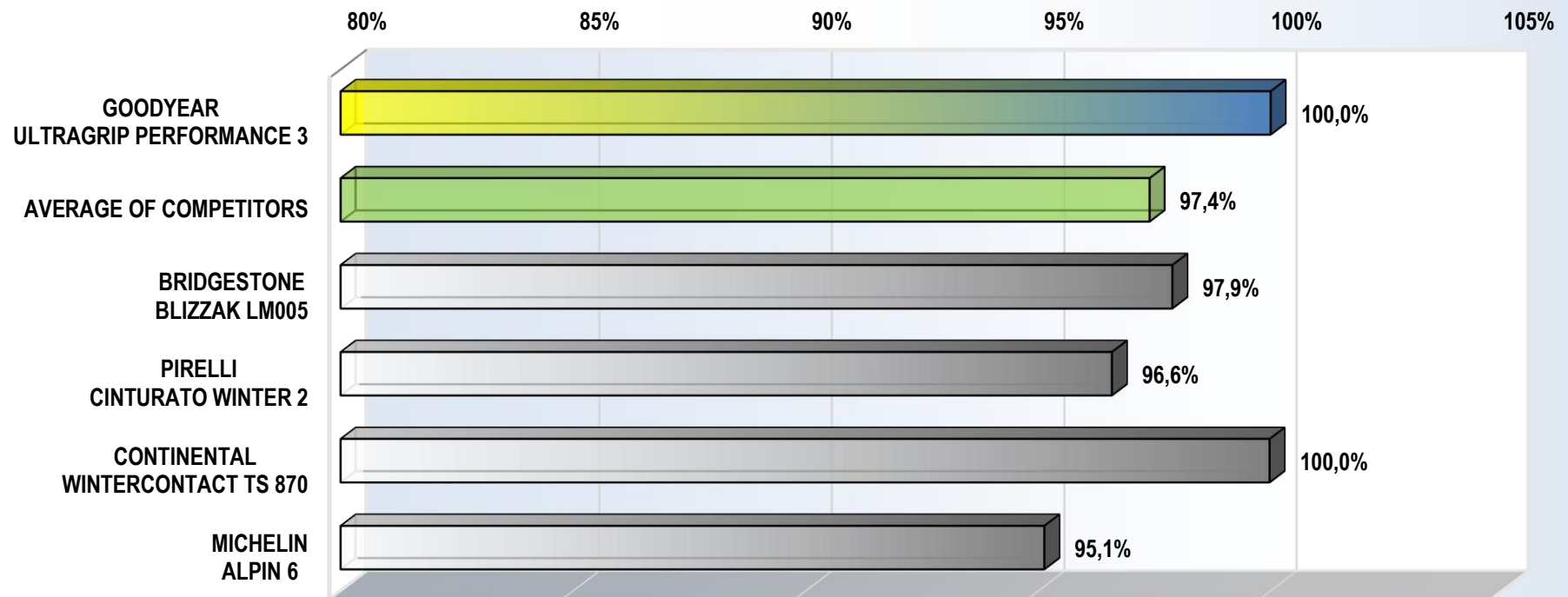


## TEST RESULTS

### ▪ LATERAL WET GRIP

- ESP off
- Circle radius: 44 m
- Test surface: wet asphalt circle
- Result Goodyear UltraGrip Performance 3:  $\emptyset$  Lap time / mean lateral acceleration: 14.65 sec / 8.09 m/s<sup>2</sup>

#### LATERAL WET GRIP PERFORMANCE \* [%]



\*) The calculation of the percentage performance is based on the mean lateral acceleration values resulting from the measured lap times.

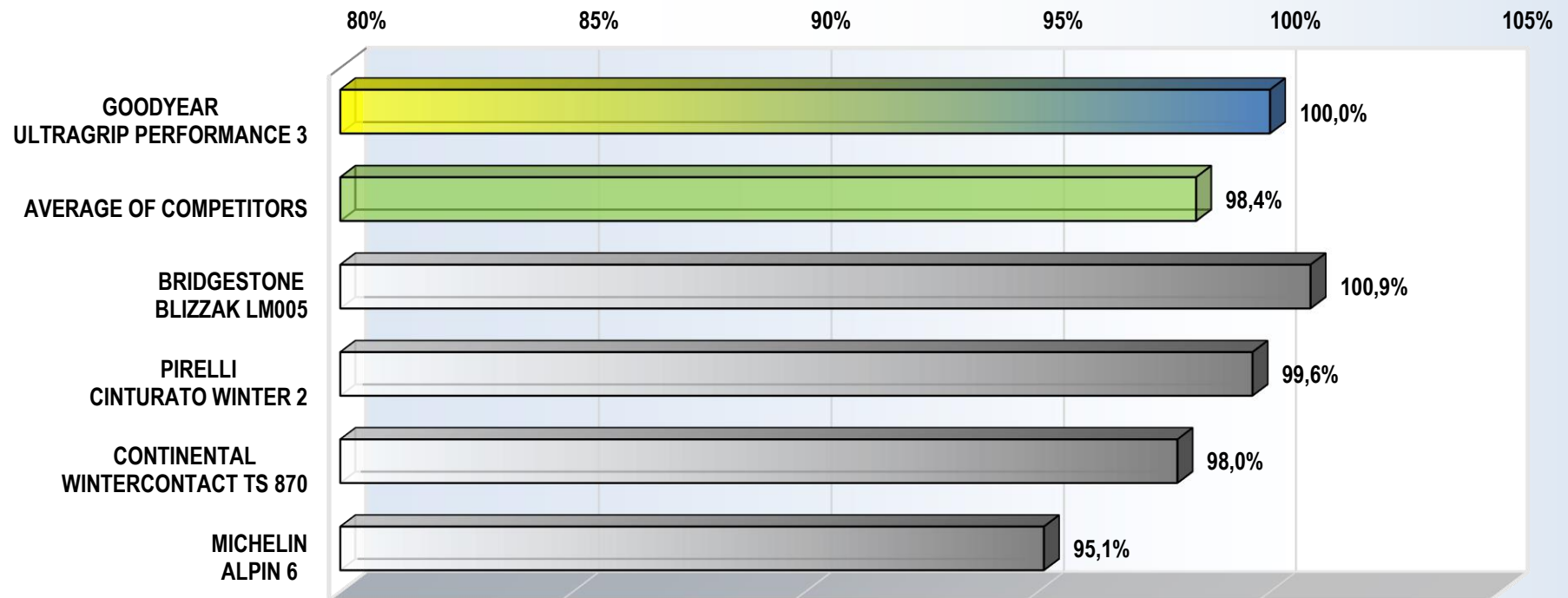


## TEST RESULTS

### WET HANDLING

- ESP off
- Subjective assessment & lap times
- Handling track with wet asphalt, length: 1700 m
- Result Goodyear UltraGrip Performance 3: Ø Speed: 89.42 km/h Ø Rating: 8.31 (out of max. 10)

#### WET HANDLING PERFORMANCE \* [%]



\*) The calculation of the percentage performance is based on the average speed and the rating scores (at the ratio 2:1).

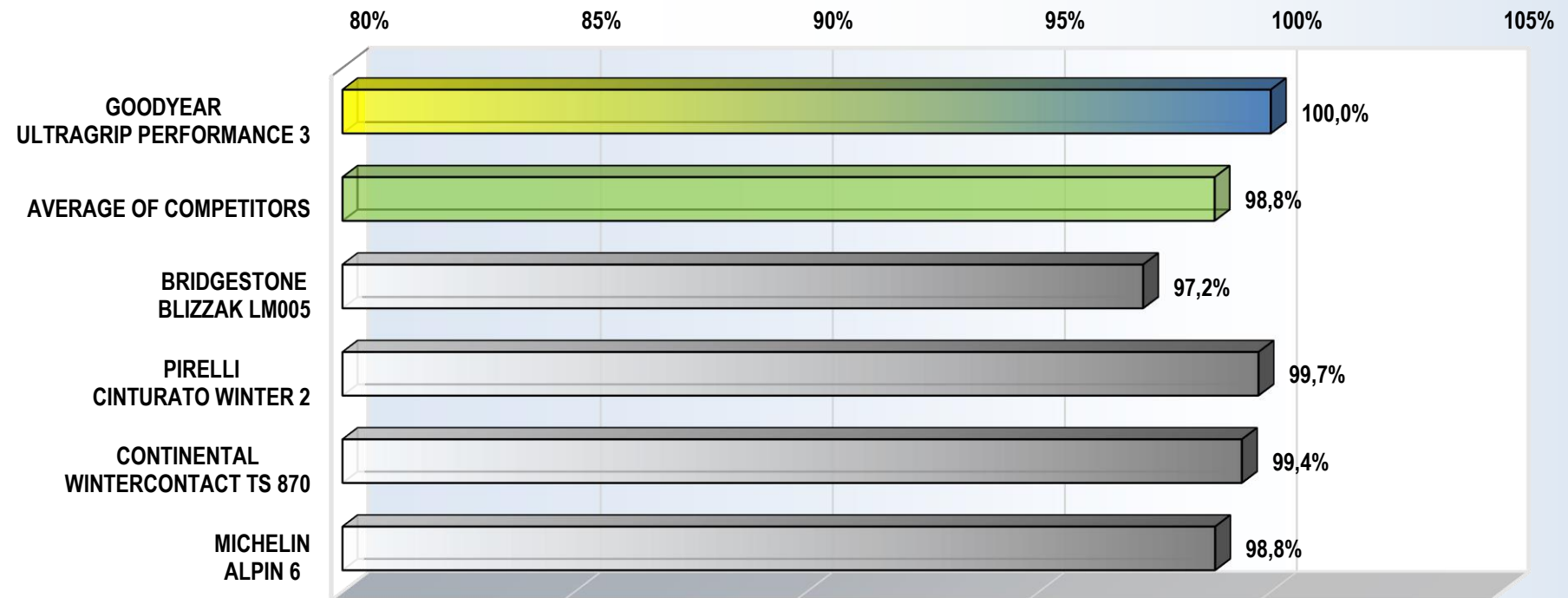


## TEST RESULTS

### ■ DRY BRAKING

- ABS-braking
- Speed range: 100 to 0 km/h
- Test surface: dry asphalt
- Result Goodyear UltraGrip Performance 3: Ø Stopping distance / mean deceleration: 39.8 m / 9.69 m/s<sup>2</sup>

#### DRY BRAKING PERFORMANCE \* [%]



\*) The calculation of the percentage performance is based on the mean deceleration values resulting from the measured braking distances.

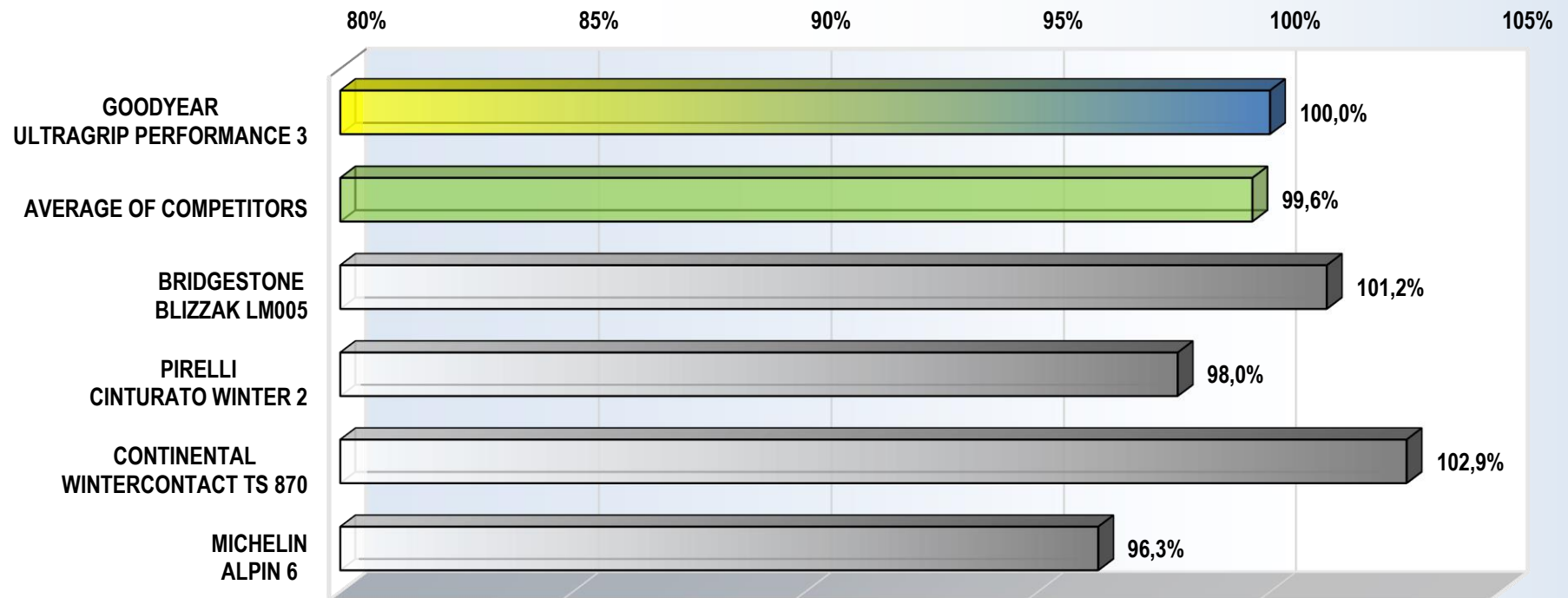


## TEST RESULTS

### ■ DRY HANDLING

- ESP off
- Subjective assessment & lap times
- Handling track with dry asphalt, length: 3100 m
- Result Goodyear UltraGrip Performance 3: Ø Speed: 108.10 km/h Ø Rating: 7.92 (out of max. 10)

#### DRY HANDLING PERFORMANCE \* [%]



\*) The calculation of the percentage performance is based on the average speed and the rating scores (at the ratio 2:1).



## SUMMARY OF RESULTS

Percentage >100% means better, percentage <100% means worse.	GOODYEAR ULTRAGRIP PERFORMANCE 3	BRIDGESTONE BLIZZAK LM005	PIRELLI CINTURATO WINTER 2	CONTINENTAL WINTERCONTACT TS 870	MICHELIN ALPIN 6
<b>ACCELERATION ON SNOW</b>	100,0%	96,2%	97,0%	100,2%	97,2%
<b>BRAKING ON SNOW</b>	100,0%	97,2%	97,6%	100,8%	98,6%
<b>HANDLING ON SNOW</b>	100,0%	90,7%	94,2%	99,1%	96,2%
<b>AQUAPLANING STRAIGHT-LINE</b>	100,0%	104,8%	104,3%	105,8%	101,6%
<b>WET BRAKING LOW<math>\mu</math></b>	100,0%	96,4%	95,0%	97,4%	99,9%
<b>LATERAL WET GRIP</b>	100,0%	97,9%	96,6%	100,0%	95,1%
<b>WET HANDLING</b>	100,0%	100,9%	99,6%	98,0%	95,1%
<b>DRY BRAKING</b>	100,0%	97,2%	99,7%	99,4%	98,8%
<b>DRY HANDLING</b>	100,0%	101,2%	98,0%	102,9%	96,3%